

Project Profile



Project: Potash Terminal Quay Repairs Project

Client: Tees Dock, Middlesbrough



The Potash Terminal Quay is an open, reinforced concrete, type quay and is approximately 400m long. The structure enables seafaring vessels with storage capacities of some 33,000 tonnes to dock, in order to load cargo & bulk materials, before setting sail. For this reason the Quays ability to function is vital to the client.

Over time the Quay had deteriorated significantly in many locations pivotal to the clients operations. Main Beams which support rail mounted crane loaders were in a state of disrepair which required specialist attention, and consideration for the clients ongoing operations.

APA Concrete Repairs Ltd were chosen as the Principal Contractor to undertake an intensive programme of concrete repairs and protective coatings to enhance the Quay for years to come, allowing the Clients valuable operations to continue during the construction phase, and for years after.

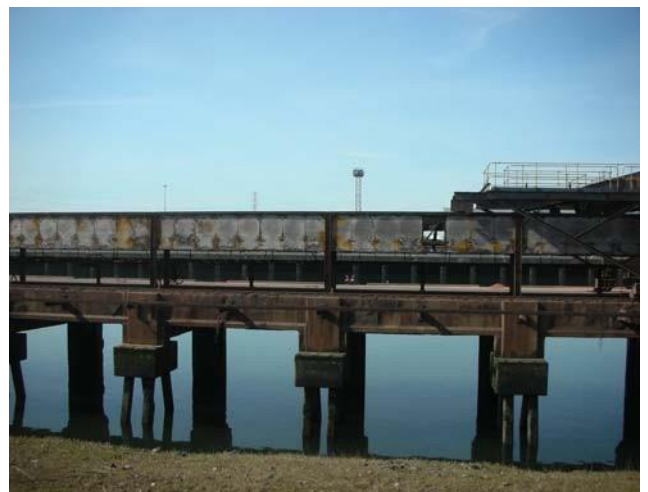
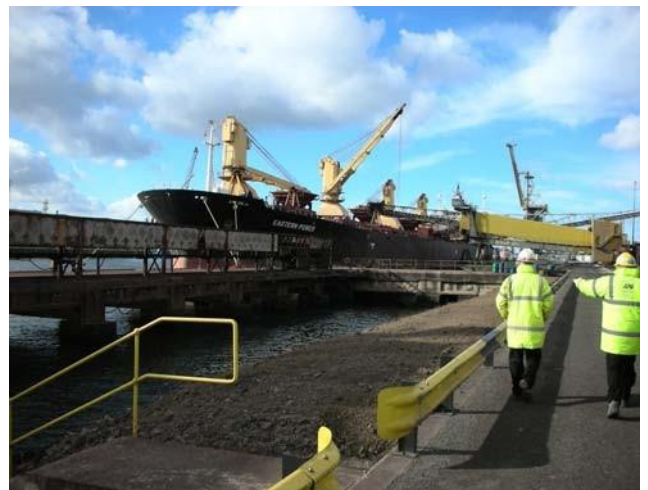
APA's ability to undertake all aspects of the specialist works 'in-house' was an attractive prospect to the Client.

NORTHERN OFFICE

Black Brook Way
Greetland
Halifax
West Yorkshire
HX4 8ED
telephone: 01422 379 640
facsimile: 01422 374 938

SOUTHERN OFFICE

Abbey House
Wellington Way
Brooklands Business Park
Weybridge
London
KT13 0TT
telephone: 0208 853 0627



e-mail: info@apaconcreterepairs.co.uk **web:** www.apaconcreterepairs.co.uk